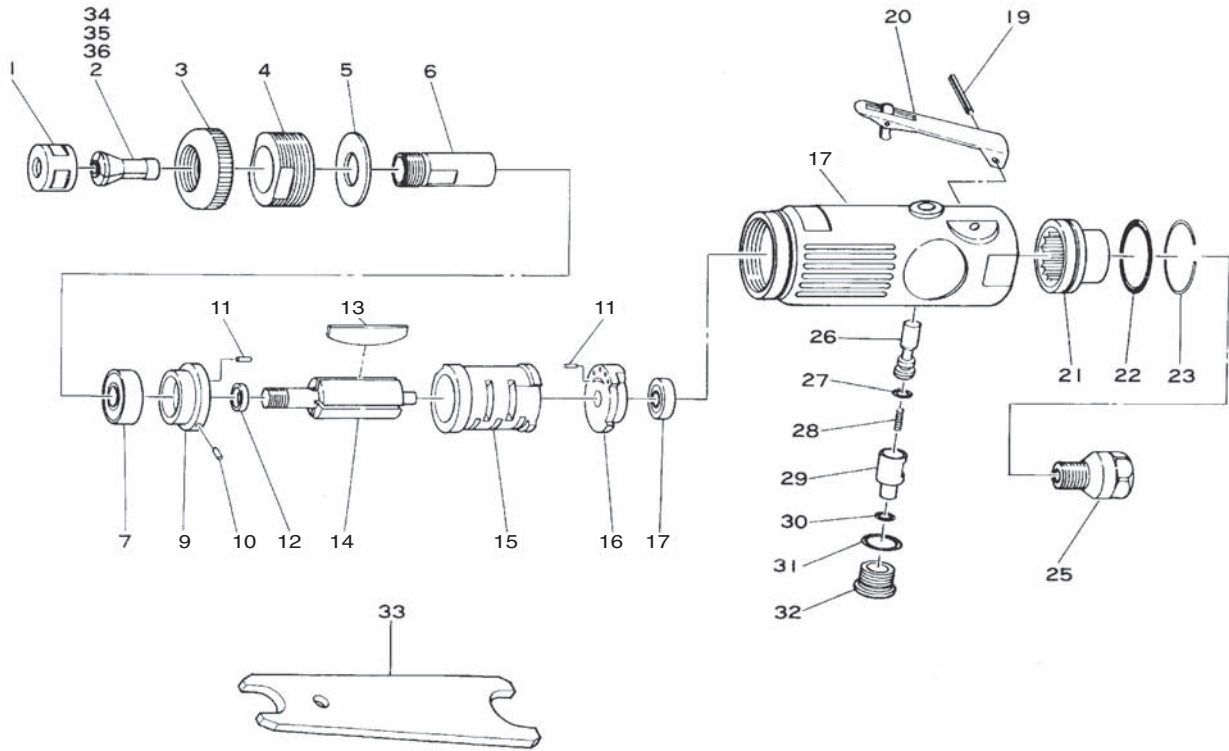


# SI-2001S

## Small Die Grinder-Rear Exhaust



Ref. No.	Parts No.	Description	Q'ty	Ref. No.	Parts No.	Description	Q'ty
1	330-23	Collet Nut	1	20	350-2L	Throttle Lever	1
2	330-24	1/4" Collet (Standard)	1	21	610-29	Deflector	1
3	330-27	Housing Cap	1	22	620-28	O-Ring	1
4	610-26	Lock Ring	1	23	610-30	Retaining Ring	1
5	610-25	Washer	1	25	610-2SC	Inlet Bushing incl. Screen (680-28A) & Retainer (CRTW-12)	1
6	330-22	Spindle	1				
7	608-ZZ	Ball Bearing	1	26	330-5	Valve Stem	1
9	610-19	Front Plate	1	27	P-4	O-Ring	1
10	25-3.5	Roll Pin (2.5-3.5mm)	1	28	350-7	Valve Spring	1
11	25-5	Roll Pin (2.5-5mm)	2	29	330-8A	Air Regulator	1
12	330-18	Collar	1	30	P-8	O-Ring	1
13	330-16	Rotor Blade	4	31	P-10	O-Ring	1
14	330-15	Rotor	1	32	330-10	Valve Screw	1
15	330-17	Cylinder	1	33	330-28	Spanner Wrench	2
16	610-12	Rear Plate	1	◆ 34	330-25	1/8" Collet	
17	696-ZZ	Ball Bearing	1	◆ 35	330-26	3mm Collet	
18	610-1SI	Motor Housing incl. Valve Bush (330-4)	1	◆ 36	330-19	6mm Collet	
19	30-24	Roll Pin (3-24mm)	1				