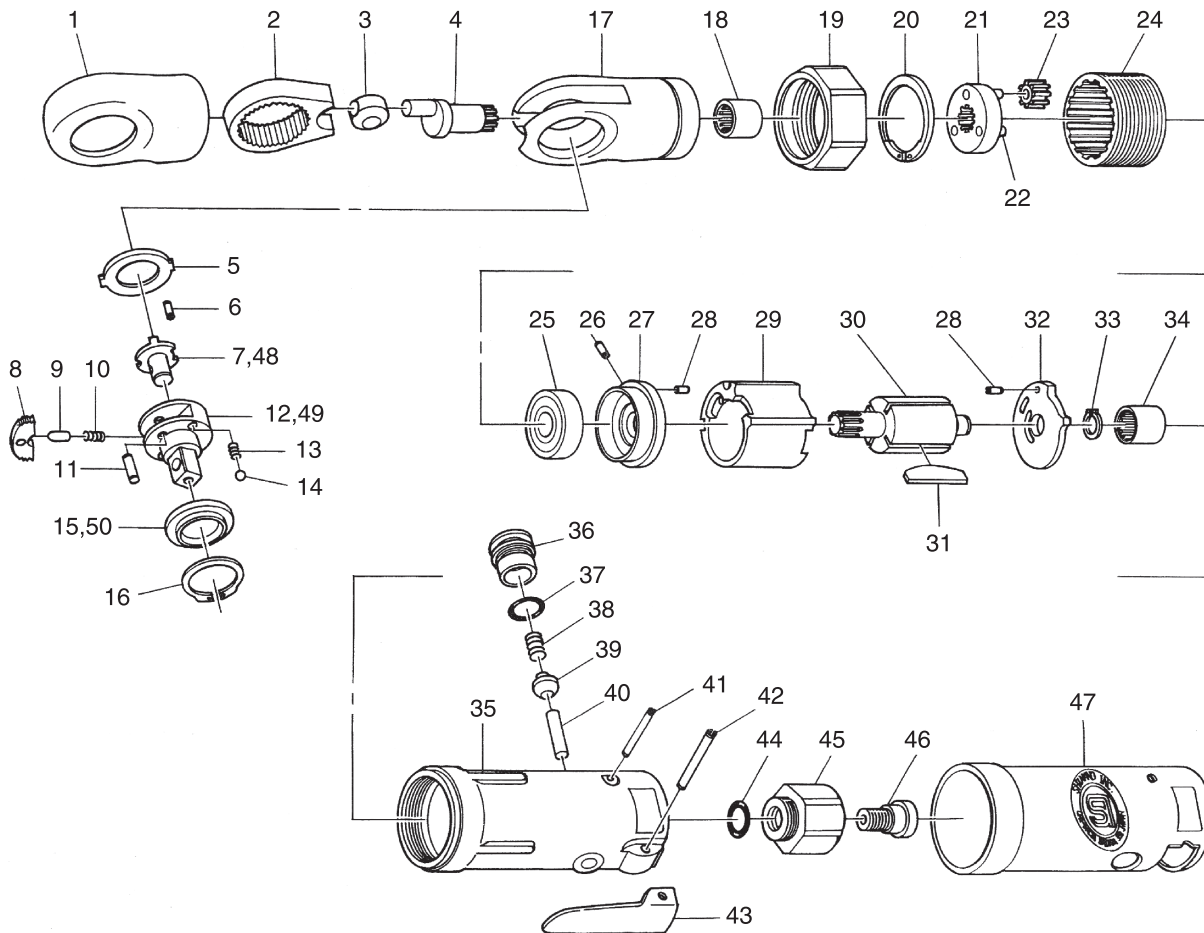


# SI-1207

## 1/4" Ratchet Wrench

# SI-1208

## 3/8" Ratchet Wrench



Ref. No.	Parts No.	Description	Q'ty	Ref. No.	Parts No.	Description	Q'ty
1	310G-5R	Boot	1	26	15-6	Roll Pin (1.5-6mm)	1
2	310-3	Yoke	1	27	310-5	Front Plate	1
3	310-8	Drive Bushing	1	28	25-4	Roll Pin (2.5-4mm)	2
4	310C-1	Crank Shaft	1	29	330-17	Cylinder	1
5	310-5A	Wear Washer	1	30	310-11	Rotor	1
6	20-5	Roll Pin (2-5mm)	1	31	330-16	Rotor Blade	4
7	310-17	Reverse Lever for 1/4"	1	32	310-4	Rear Plate	1
8	310-9A	Ratchet Pawl	1	33	JS-6,35	Retaining Ring	1
9	310-16	Reverse Pin	1	34	KE-45	Needle Bearing	1
10	310-34	Reverse Spring	1	35	310G-1	Motor Housing incl. Bush (310-1S)	1
11	310-24	Dowel Pin	1	36	310KD-5	Air Regulator	1
12	310-6	1/4" Sq. Anvil	1	37	S-9	O-Ring	1
13	310B-33	Thrust Washer Spring	2	38	670-49	Valve Spring	1
14	SB-30	Steel Ball	2	39	300-10	Valve	1
15	310-23	Thrust Washer for 1/4"	1	40	310-4S	Valve Pin	1
16	310-60	Retaining Ring	1	41	25-20	Roll Pin (2.5-20mm)	1
17	310D-2	Ratchet Housing	1	42	30-24	Roll Pin (3-24mm)	1
18	HK0910	Needle Bearing	1	43	312-12T	Throttle Lever	1
19	1091C-17	Lock Ring	1	44	P-8	O-Ring	1
20	GV-24	Retaining Ring	1	45	310G-3	Inlet Bushing	1
21	310-2	Planet Cage incl. Planet Pins (310-19x3)	1	46	310G-4B	Bearing Screw	1
22	310-19	Planet Pin	3	47	611-4	Housing Cover	1
23	310-12	Planet Gear	3	★48	310S-17	Reverse Lever for 3/8"	1
24	310-21	Internal Gear	1	★49	310S-6	3/8" Sq. Anvil	1
25	608-ZZ	Ball Bearing	1	★50	310S-23	Thrust Washer for 3/8"	1