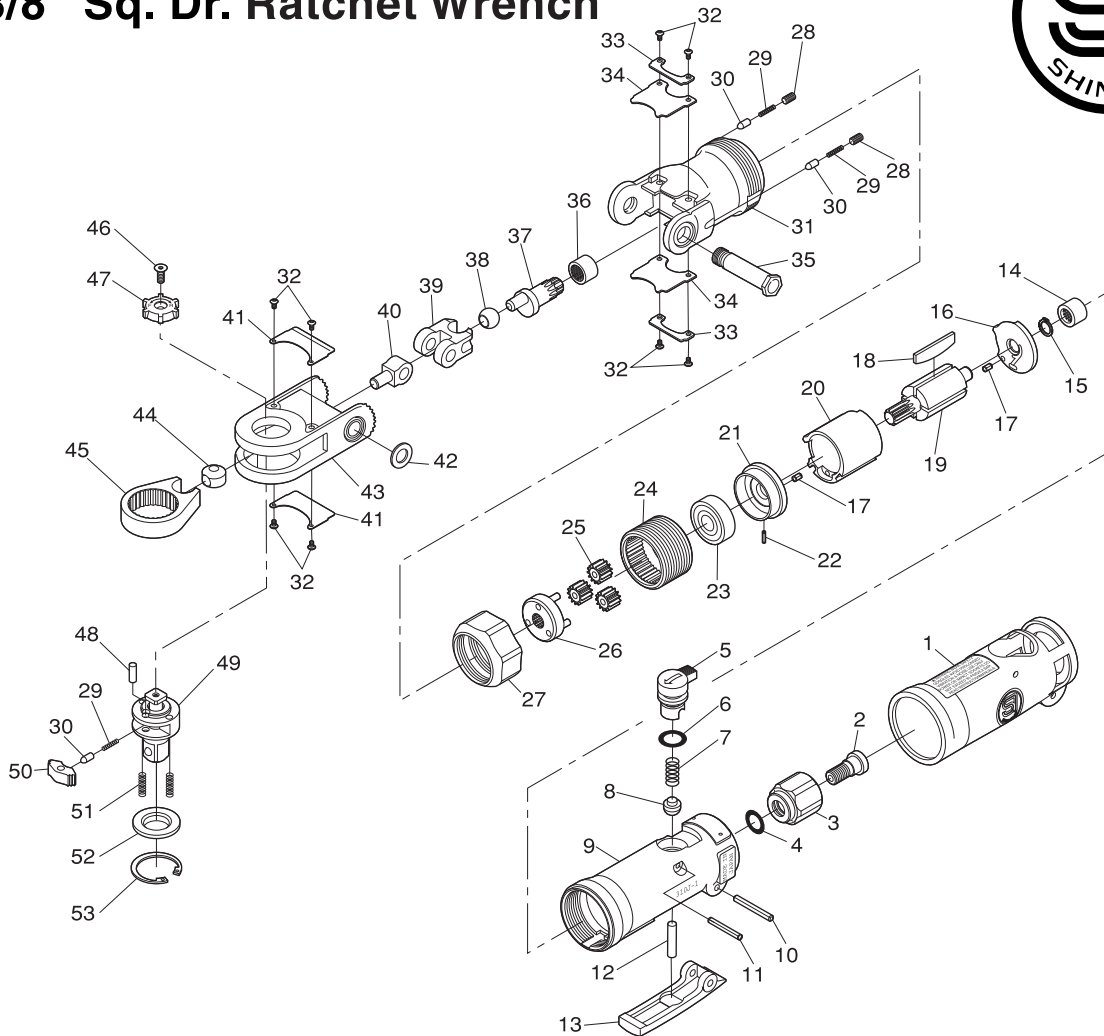


SI-1241A

3/8" Sq. Dr. Ratchet Wrench



Ref. No.	Parts No.	Description	Q'ty	Ref. No.	Parts No.	Description	Q'ty
1	310J-2	Housing Cover	1	30	310-16	Reverse Pin	3
2	310G-4B	Retaining Screw	1	31	321-1	Pivot Housing	1
3	310G-3	Inlet Bushing	1	32	322-16	Screw	8
4	P-8	O-Ring	1	33	321-11	Pivot Cover Retainer	2
5	315-9A	Air Regulator	1	34	321-3	Pivot Cover	2
6	S-9	O-Ring	1	35	321-4	Pivot Shaft	1
7	670-49	Valve Spring	1	36	HK0910	Needle Bearing	1
8	300-10	Valve	1	37	310C-1	Crank Shaft	1
9	310J-1	Motor Housing incl. Bush (310-1S)	1	38	321-13	Drive Bushing	1
10	30-24	Roll Pin (3φ-24mm)	1	39	321-5A	1st Driver	1
11	25-20	Roll Pin (2.5φ-20mm)	1	40	321-6A	2nd Driver	1
12	310-4S	Valve Pin	1	41	321-10	Ratchet Housing Cover	2
13	315-8	Throttle Lever	1	42	DB-6H	Cup Spring	1
14	KE-45	Needle Bearing	1	43	321-2	Ratchet Housing	1
15	JS-6.35	Retaining Ring	1	44	310-8	Drive Bushing	1
16	310-4	Rear Plate	1	45	310-3	Yoke	1
17	25-4	Roll Pin (2.5φ-4mm)	2	46	Y-M30---60	Counter Sink	1
18	330-16	Rotor Blade	4	47	1310-6	Reverse Dial	1
19	310-11	Rotor	1	48	310-24	Dowel Pin	1
20	330-17	Cylinder	1	49	310QT-1	3/8" Sq. Anvil incl. Push Pin & Spring (310QT-2, 310GL-4)	1
21	310-5	Front Plate	1	50	310-9A	Ratchet Pawl	1
22	15-6	Roll Pin (1.5φ-6mm)	1	51	310MT-2	Thrust Washer Spring	2
23	608-ZZ	Ball Bearing	1	52	310S-23	Thrust Washer for 3/8" Sq. Anvil	1
24	310-21	Internal Gear	1	53	310-60	Retaining Ring	1
25	310-12	Planet Gear	3				
26	310-2	Planet Cage incl. Planet Pins (310-19×3)	1				
27	321-12	Lock Ring	1				
28	ROM40---30	Set Screw	2				
29	310-34	Reverse Spring	3				