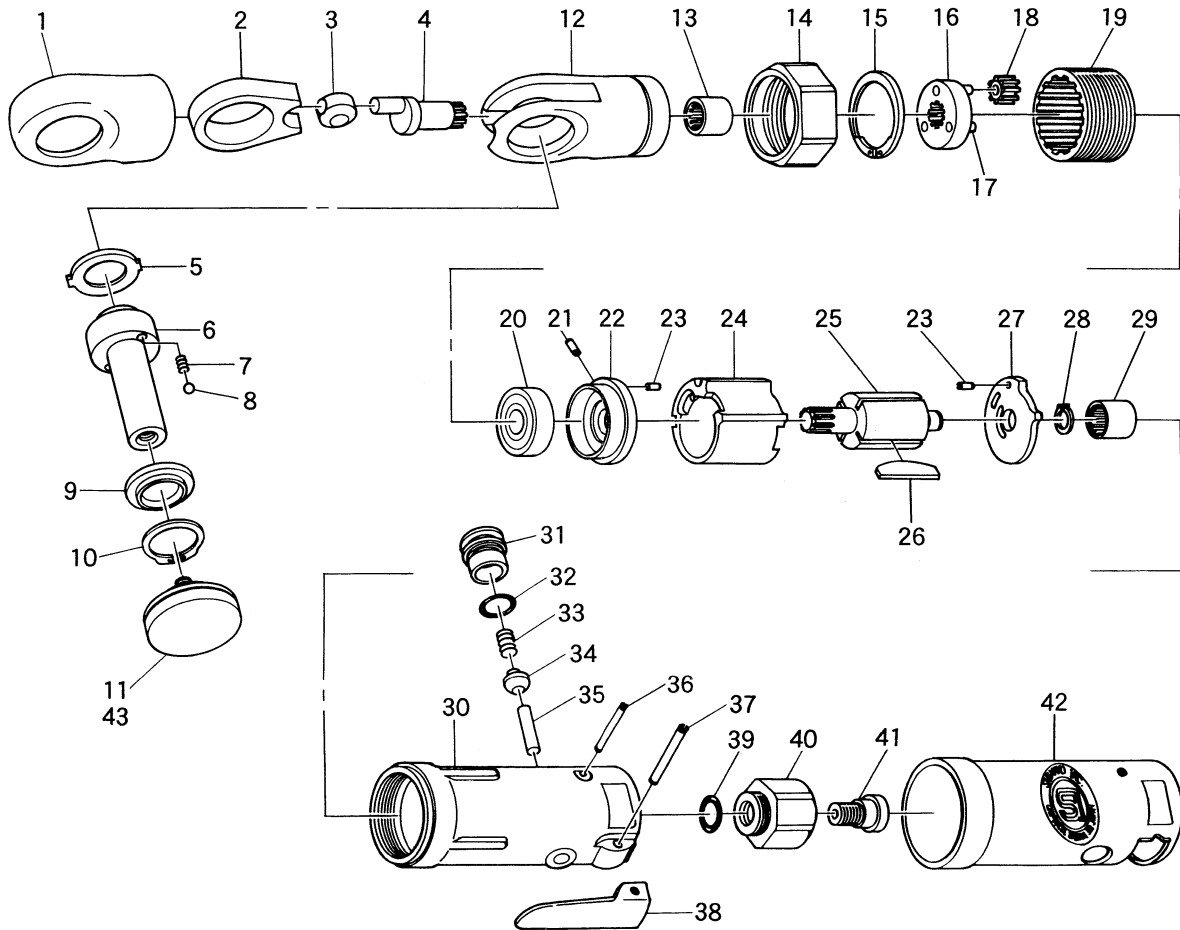


# SI-3300

## Mini Oscillation Sander



Ref. No.	Parts No.	Description	Q'ty	Ref. No.	Parts No.	Description	Q'ty
1	310GS-2R	Boot(Red)	1	23	25-4	Roll Pin (2.5 φ -4mm)	2
2	310GS-3	Yoke	1	24	330-17	Cylinder	1
3	310-8	Drive Bushing	1	25	310-11	Rotor	1
4	310C-1	Crank Shaft	1	26	330-16	Rotor Blade	4
5	310-5A	Washer	1	27	310-4	Rear Plate	1
6	310GS-1	Spindle	1	28	JS-6.35	Retaining Ring	1
7	310B-33	Thrust Washer Spring	2	29	KE-45	Needle Bearing	1
8	SB-30	Steel Ball	2	30	310G-1	Motor Housing incl. Bush (310-1S)	1
9	310S-23	Thrust Washer for 3/8" Sq. Anvil	1	31	310KD-5	Air Regulator	1
10	310-60	Retaining Ring	1	32	S-9	O-Ring	1
11	310GS-4	30 φ mm Pad	1	33	670-49	Valve Spring	1
12	310D-2	Ratchet Housing	1	34	300-10	Valve	1
13	HK0910	Needle Bearing	1	35	310-4S	Valve Pin	1
14	1091C-17	Lock Ring	1	36	25-20	Roll Pin (2.5 φ -20mm)	1
15	GV-24	Retaining Ring	1	37	30-24	Roll Pin (3 φ -24mm)	1
16	310-2	Planet Cage incl. Planet Pins(310-19×3)	1	38	312-12T	Throttle Lever	1
17	310-19	Planet Pin	3	39	P-8	O-Ring	1
18	310-12	Planet Gear	3	40	310G-3	Inlet Bushing	1
19	310-21	Internal Gear	1	41	310G-4	Retaining Screw	1
20	608-ZZ	Ball Bearing	1	42	611-4	Housing Cover	1
21	15-6	Roll Pin (1.5 φ -6mm)	1	43	310GS-5	30 φ mm Pad (Rubber)	1
22	310-5	Front Plate	1				